



**TIANJIN XIN HONG
INTERNATIONAL CO., LTD.
天津鑫弘国际贸易有限公司**

Tianjin Xinhong International Co., Ltd.

Tianjin Xinhong International Co., Ltd. has Located in Tianjin Binhai New Area, the geographical position is superior with convenient traffic and surrounding with many shipping companies, design companies and equipment companies.

Tianjin Xinhong International Co., Ltd. is the **Group Business Headquarter and Group Trading House** of Xinfu holding group, it relies on the group's entity industries, committed to ship repair / conversion, new shipbuilding, port machinery manufacturing and so on. Simultaneously, the marine and offshore machinery and equipment import & export trade, food trade and financial leasing services are also taken into consideration.



Enterprise Culture

Through the integration of internal & external resources , Tianjin Xinhong will provide better engineering and management services for the clients.

For future development plan, TJXH will become a large international integrated trading company which is "industry-trade integration and trade-finance combination" .



Tianjin Xinhong International Organization Diagram



International Business Marketing Network

TIANJIN XINHONG INTERNATIONAL CO.LTD. is focusing on building the global business network, TJXH will set up branch company /office in Greece, Germany, Singapore, USA, Korea, Hong Kong, and Taiwan. which will further enhance the customer's international service ability.



GROUP INTRODUCTION

SHANDONG XINFA HOLDING CO., LTD

Shandong Xinfa Holding CO., LTD is located in ShanDong WeiHai China. The company is founded in 1996, after 20 years effort, a combined group covering ship repair / conversion, shipbuilding, import and export of environmental science and technology & machinery and equipment, ocean fishing, port wharf & logistics, ocean shipping, fishery food total nine industries as a large-scale fishery-industrial group. Xinfa, Lanrun, Xinhong, QOF four group companies and TianJin Xinhong international are belong to Xinfa holding, which own 4000 employees, total asset 7.3 billion yuan, annual turnovers up to 3 billion Yuan.

CORPORATE PROFILE - ORGANIZATION



GROUP QUALIFICATION



GROUP QUALIFICATION



GROUP INDUSTRY SECTOR

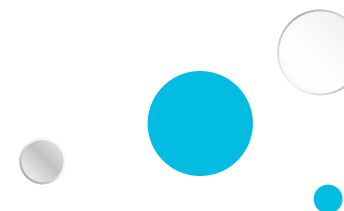


MAIN BUSINESS



Nine Business Segments Go Ahead Hand In Hand

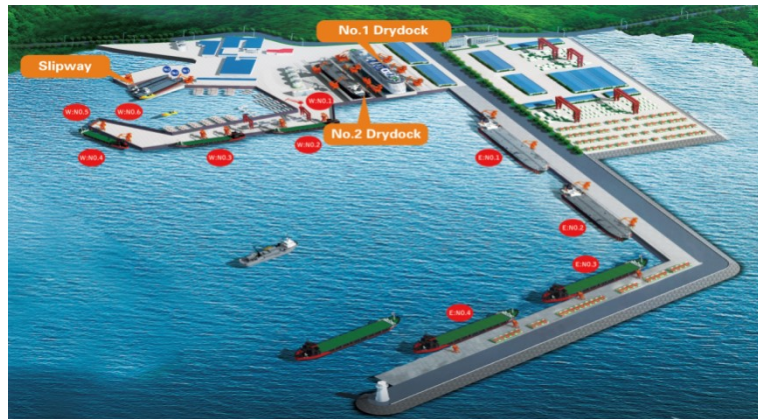
Ship repair / Conversion, Shipbuilding, Environmental science and technology & Machinery and Equipment, Ocean fishing, Port wharf & Logistics, Ocean Shipping, Fishery Food, Ship management and Ship Chartering Service.



Ship Repair

XinHong Heavy Industry Co.Ltd.(CUD Weihai Shipyard) was established in 2010 which located in golden waterway of north-south transportation routes.

Weihai international airport is 38 kilometers from shipyard as well as the Qingdao international airport is 230 kilometers from shipyard.

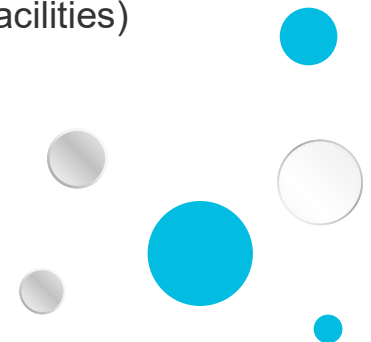


Ship Repair

CUD Weihai shipyard total area is 4,400,000m², which owns two dry docks NO.1 drydock of DWT 300, 000, NO.2 drydock of DWT 200, 000, and 2600m of quay berth with Max Draft 9.5m. There are 300,000 DWT berth, 180,000 DWT berth and 50,000 DWT berth, equipped with shore crane for the repair.

The advantageous geographical location which is suitable for all kinds of ship repair and conversion within DWT 300,000.00.

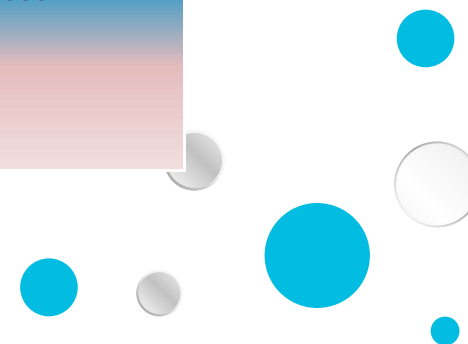
In 2017, CUD (Weihai) shipyard has repaired and converted more than 145 ships, and total turnover has over 300 million RMB. (List of equipment and facilities)



Ship Repair

Dock and Facilities

Dock	Dimension(m)	Deadweight	Crane	Shore power
NO.1	355X78X14	300, 000	60TX50M 1SET 80TX60M 1SET	440V/380V
NO.2	325X54X13	200, 000	40TX40M 1SET 80TX60M 1SET	440V/380V



Ship Repair

Quay and Facilities

West Quay	L x D (m)	Crane (Ton/Radius)	POWER
W.No.1	160 x -7.5	100T Truck Crane	440/380V
W.No.2	450 x -9.5	40T X 70M , 25T X25M	440/380V
W.No.3	450 x -9.5	40T X 70M , 25T X25M	440/380V
W.No.4	240 x -8.0	200T Truck Crane	440/380V
W.No.5	160 x -7.5	80T Truck crane	440/380V
W.No.6	240 x -6.5	20T X 20M	440/380V
East Quay	Length x Depth (m)	Crane (Ton/Radius)	Electric Power
E.No.1	580 x -9.5	50T/90M x 2Set	440v/380v
E.No.2	420 x -12	Under Construction	
E.No.3&4	1200X-12	Under Construction	

Ship Repair

Equipment and Facilities



Ship Repair

Equipment and Facilities



Tugboat	Cherry Picker	Forklift	Air compressor	Flat-bed truck
2600 HPx1 Set	36M x 6 Sets	10T x 4 Sets	Station-650m³/Min	100T x 2 Sets
4000 HP x1 Set	32M x 10 Sets	5T x 6 Sets	movable. air compressor x 10 Sets	
5200 HP x1 Set	26M x 15 Sets	3T x 4 Sets		
	28M x 10 Sets			

Ship Repair

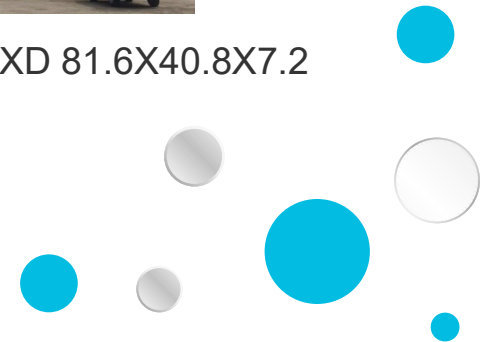
Achievement



VLCC LXB 332X58



Offshore Platform LXBXD 81.6X40.8X7.2



Ship Repair

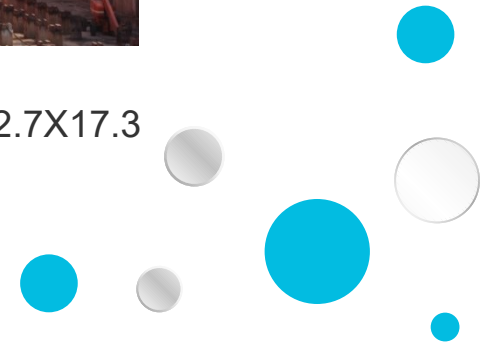
Achievement



Container vessel LXB 335X48



LPG vessel LXB 102.7X17.3



Ship Repair

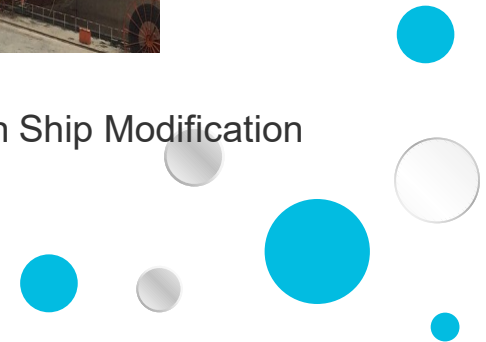
Achievement



RORO Vessel LXB 190.5X32.36



Wind Power Installation Ship Modification
LXB 144X40

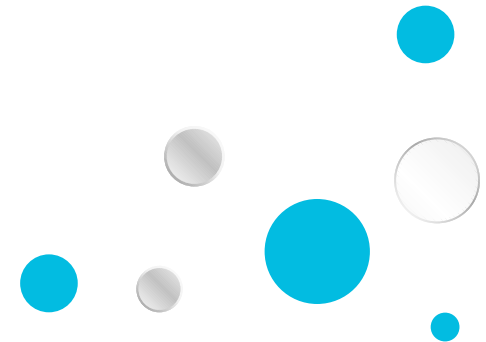


Shipbuilding

XINBANG Shipbuilding industry is located in Weihai , Shandong, China. The total area is 210 acres, It has one set of 3000 ton slip way, 16 set of 3000 tons ship building ship way, 1 set of 100 ton crane, one set of 156 meters traversing facilities, 1000 m outfitting quay.

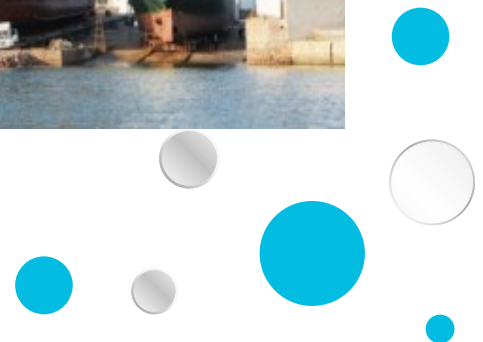
The company has owned more than 300 employees, and has the ability to build all kind of ships under 120 meters.

Shipway	Dimension	Deadweight	Crane	Shore power
No.1	130x20	3,000	100 tons X 1 Set	440v/380v



Shipbuilding

Target :To create a professional shipbuilding base in China.



Shipbuilding

The company has the ability to design and build various kinds of vessels, and can provide design, procurement, construction and commissioning technical services for the owners.

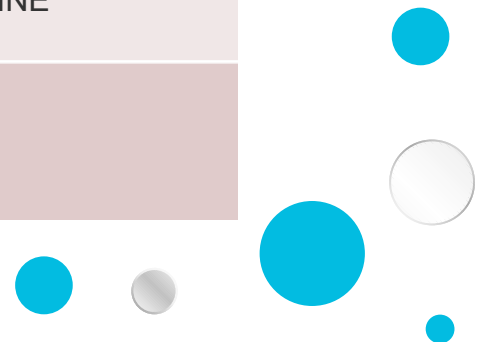
The company has gained ISO9001 quality management system certification and ISO18001 security system certification.



Shipbuilding

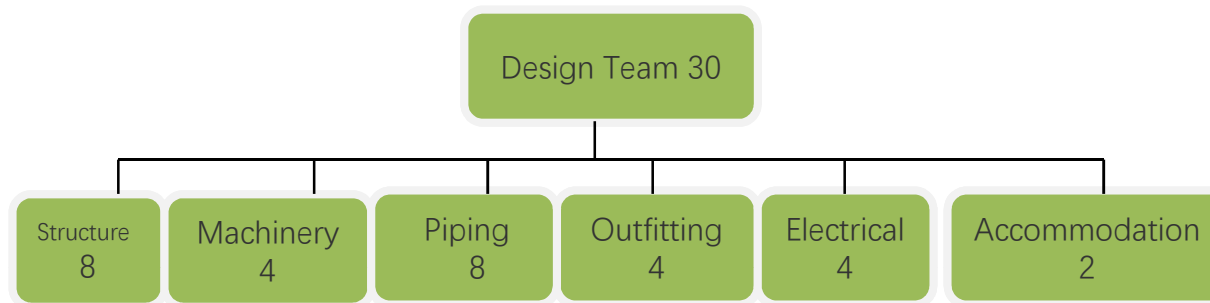
Company Design Interface:

Engineering Term	Deliverable	Sub-contract	Cooperation Partner
Basic Design	General arrangement; Technical specifications; P&IDs for main piping systems	Sub-contract	CSDC/ SDARI / CIMC/ BEST WAY/ CS MARINE
Detail Design	Structural and fatigue analyses; AFC design drawings ; MTOs.....	Sub-contract	SDARI /Whales/ CSDC/BEST WAY/ CS MARINE
Shop Design	Structural, Piping& Electrical shop drawings	In -Door	XinFa Group

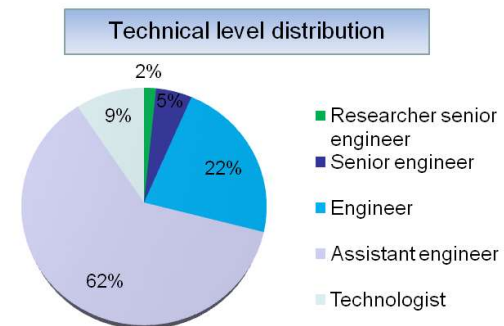


Shipbuilding

Company Design Ability :

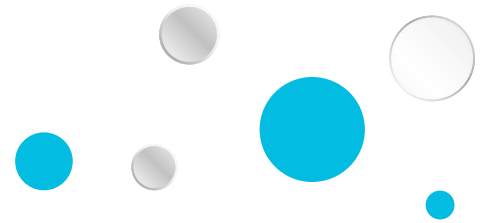


Auto cad		2D design
NAPA		Analysis
TRIBON		3D design
Sigma NEST		Nesting
DONGXIN		Shell plate



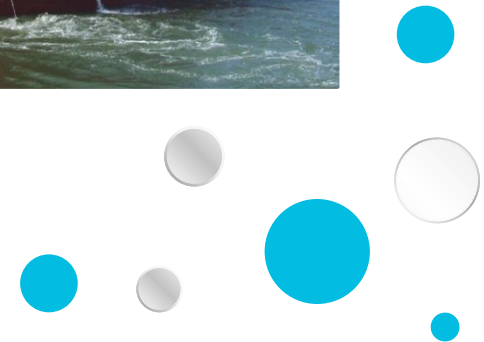
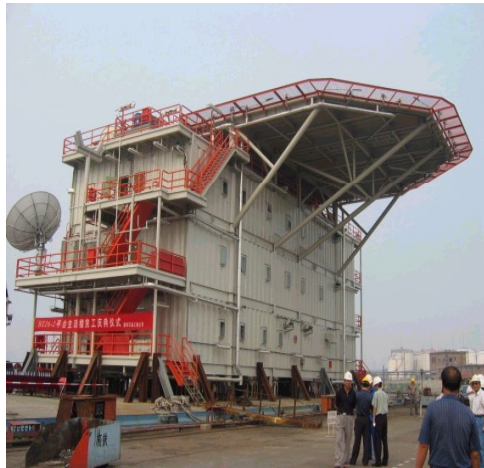
Shipbuilding

Shipbuilding Performance :



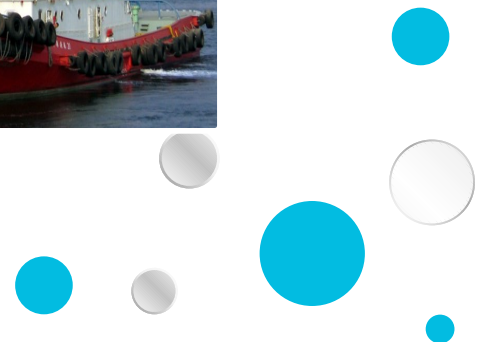
Shipbuilding

Shipbuilding Performance :

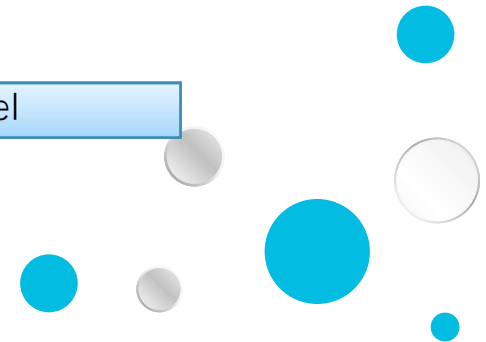
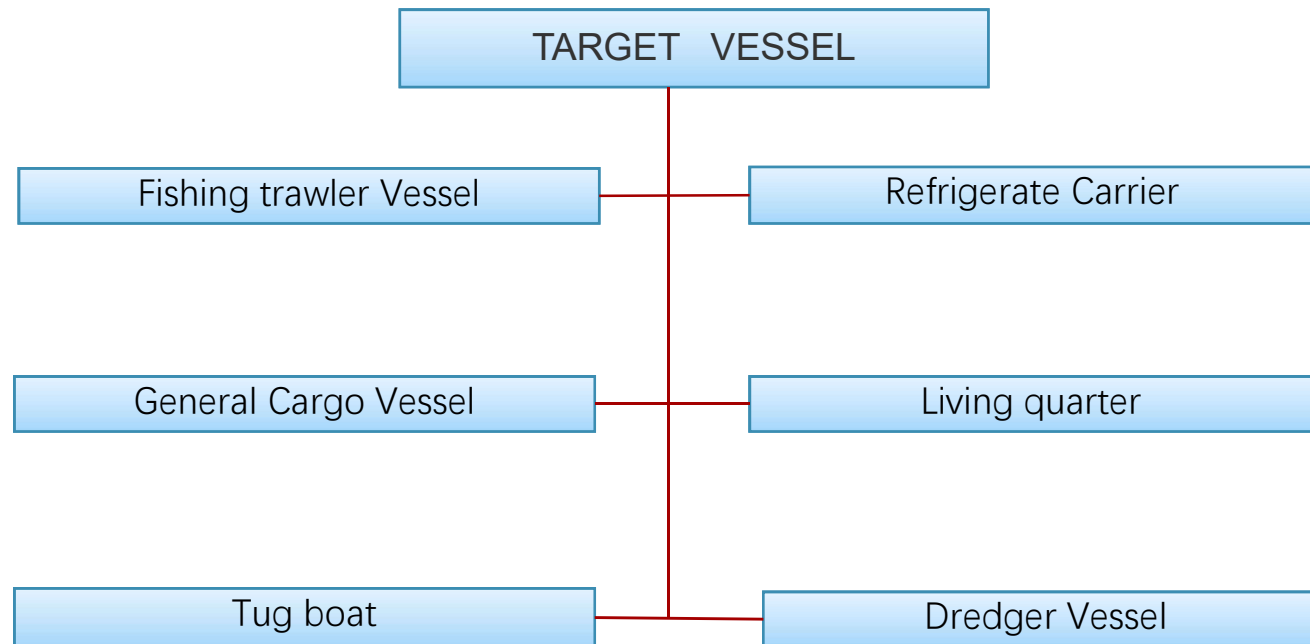


Shipbuilding

Shipbuilding Performance :



Shipbuilding



Environment Protection Technology

Shandong Pure Ocean Technology Co., Ltd is abbreviated POT, covering an area of 266,400 square meters. POT was founded in 2009 which is concentrating on port and marine machinery manufacture for 9 years. POT enters into environment protection technology and marine high technology field and has been focusing on the development of the De-SOx system for two years.

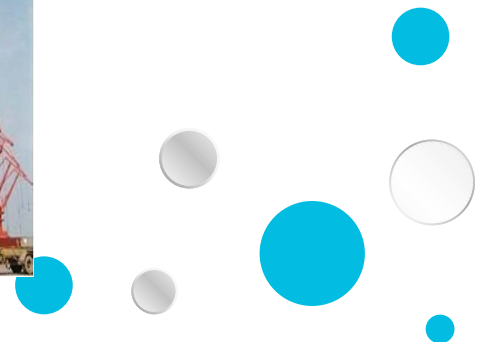
POT has a professional stainless steel manufacturing workshop; a painted spraying and coating workshop. Machinery workshop is equipped with all kinds of facilities for machining, special spare, CNC cutting, cold machining, NC welding and trans-loading.



Port Machinery

Main products of POT

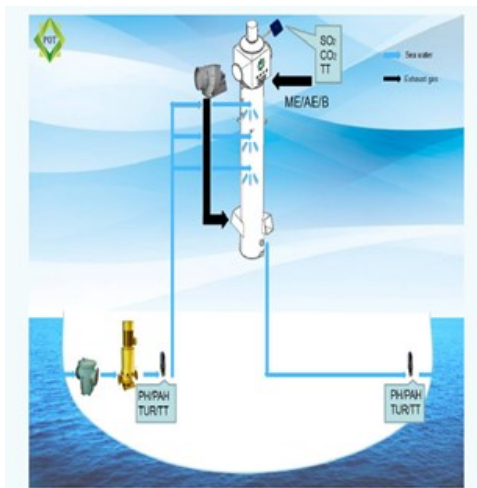
Since the company was put into operation, it has undertaken and successfully completed 24 sets of wind power projects, 5 sets of port machinery, and several steel structure and ship maintenance projects, which has accumulated advanced management and technical experience.



Environment Protection Technology

Marine De-SOx System mode:

1、Open loop mode



2、Closed Loop Mode



3、Hybrid Mode



Environment Protection Technology

POT De-SO_x System has been certified by several classification societies, including the ABS, LR and so on.

Lloyd's Register
Lloyd's Register Classification Society (China) Co., Ltd.
19th Floor, Ocean Towers
552 Yan An Dong Road
Shanghai 200001
P. R. China

Date: 29th August 2017
Our Reference: STS/NG/SC/AL/251517008/0-325499

APPROVAL IN PRINCIPLE
Certificate No. 170008
Issued to: Shandong Pure Ocean Technology Co. Ltd.
For: POT Exhaust Gas Cleaning system

This is to certify that Lloyd's Register Classification Society (China) Co., Ltd has undertaken Design Concept Evaluation of POT Exhaust Gas Cleaning system concept designs, with a view to awarding an "Approval in Principle". The evaluation covers an overall examination of fundamental aspects of the design in accordance Part 5, Chapter 24 of the LR Rules July 2017 and Regulations for classification of ships.

Application limitation: Marine applications subject to the exhaust gas cleaning system complying with LR Rules and Regulation for the particular service.

Lloyd's Register Classification Society (China) Co., Ltd considers that the proposed design concept is based on acceptable principle and concept that can be Approved in Principle.

Final Lloyd's Register Classification/Statutory approval shall be subject to full compliance with all appropriate Rules and Regulations relating to the Exhaust Gas Cleaning System designs.

Evaluation Documentation

Document No.	Rev.	Title/Description	Date
POT150-Jul-27	A	Document for LR Approval of POT Exhaust Gas Cleaning System	20170727
POT-DeSOx-15005-001	A	POT gas exhaust cleaning system P&ID Diagram	20170727
POT-DeSOx-150	A	POT gas exhaust cleaning system electrical single line Diagram (page 2-13)	20170727
-	-	- POT gas exhaust cleaning system alarm list	-
-	-	- Material of construction	-
-	-	- Technical data for Pipes, valve and equipment	-

Xiaodong Zhang / Senior Specialist
Shanghai Technical Support Office
Lloyd's Register Classification Society (China) Co., Ltd.

Kelin Zhang / Senior Specialist
Shanghai Technical Support Office
Lloyd's Register Classification Society (China) Co., Ltd.

Lloyd's Register Classification Society (China) Co., Ltd.
19th Floor, Ocean Towers, 552 Yan An Dong Road, Shanghai 200001
A member of Lloyd's Register Group Limited

Lloyd's Register Group limited, its affiliates and subsidiaries and their respective officers, employees or agents do not accept any liability in relation to the information in this document. Lloyd's Register assumes no responsibility and shall not be liable to any person for any loss, damage or expense caused by reliance on the information or advice in this document or for any loss, damage or expense caused by reliance on the information or advice in that case any responsibility or liability is exclusively on the terms and conditions set out in that contract.

Electronically published by ABS Shanghai
Reference T1667292, dated 24-AUG-2017.

ABS
SHANDONG PURE OCEAN TECHNOLOGY CO., LTD.
NO.4 WEST ROAD, RENHE TOWN, RONGCHENG CITY, WEIHAI, SHAN DONG, CHINA.

Refer To: XWX
File Ref: T-8-1
Task No.: T1667292
24 August 2017

Attn.: Mr. Dong Qing.
Re: **Approval in Principle**
Exhaust Gas Cleaning System (Type: POT Exhaust Gas Cleaning System)

Gentlemen:

We have received one (1) electronic copy of the drawings as listed therein on 14 August 2017 through ABS ODE client interface on the above subject, toward "Approval in Principle". The purpose of the review for "Approval in Principle" is to investigate the feasibility of the conceptual design, and identify any major deficiencies that would prove problematic in ABS review of the design for classification.

With the above objective, an independent and unbiased review of the subject drawing was carried out in accordance with the following:

- ABS Guide for Exhaust Emission Abatement, October 2013 (Updated January 2017)

With regard thereto, we are pleased to advise that insofar as the above requirements are concerned, the arrangements and details as indicated appear to be satisfactory in association with the below comments and the following:

It should be noted that our review for the subject drawing at this time in no way preclude any future amendments and comments which may be deemed necessary.

Compliance with the applicable IMO Regulations and Guidelines (Resolution MEPC. 250(68) - 2015 Guidelines for Exhaust Gas Cleaning Systems, adopted 15 May 2015) is a pre-requisite for ABS approval of the design for classification.

Comments:

1. The following drawings/documents are to be submitted for vessel specific review:
 - 1) Detail exhaust back pressure calculations/analysis for vessel specific submission
 - 2) Details of all piping systems, including details of piping and associated components, design pressures, temperatures, insulation, and drip trays, where applicable for vessel specific submission
 - 3) Descriptions and schematic diagrams for the control and monitoring systems, including set points for abnormal conditions and details of the location and position at which exhaust emission monitoring and wastewater monitoring are to be located
 - 4) Material specifications for the scrubber unit, pumps, valves, storage/press tanks, residue tanks, piping, distribution systems, separators, and associated components.

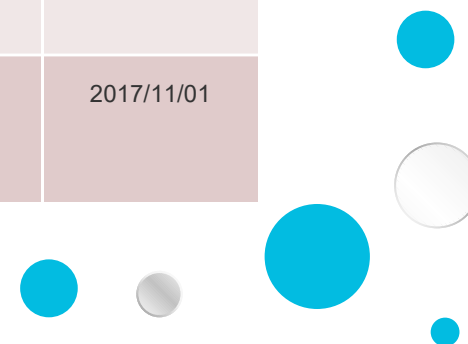
ABS Shanghai Engineering
3rd Floor, Silver Tower No. 88 Taicang Road, Huangpu District, Shanghai 200017, P. R. China
TEL: 86-21-22101888 FAX: 86-21-22101844 E-MAIL: SCS@ABS.COM

Electronically published by ABS Shanghai
Reference T1667292, dated 24-AUG-2017.

Environment Protection Technology

Performance:

NO.	Ship owner	Ship name	IMO.	classification	Flag	Delivery date
1	WEIFONG SHIPPING	WEIHE	IMO 9601091	NK	HK	2017/8/12
2	KINGFISHERS SHIPPING	BAO LUCKY	IMO 9602837	KR	PANAMA	2017/8/16
3		BAO REEFER	IMO 9066485	BV	LIBERIA	
4		FORTUNA REEFER	IMO 7908770	PMDS/LR	PANAMA	
5	Bocimar Hong Kong Limited	BAO GROLY	IMO 9457309	BV	LBR	2017/11/01



Import And Export Of Machinery & Equipment

Tianjin Xinhong International Co., Ltd. relies on the group industry to develop machinery and equipment import & export trading business, and provide marine and offshore machinery equipment supporting services for ship-owners and shipyard.

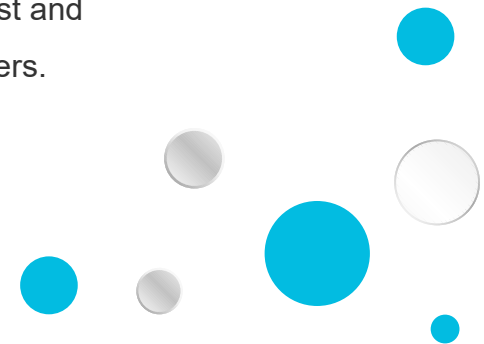
Advantages of products and services:

◆ Integration of marine & offshore engineering systems:

Relying on our own technical strength, Tianjin Xinhong provides the professional integration services to the clients, which has the competitive price and high quality stand.

◆ Centralized purchase and retail of equipment and accessories:

Through the centralized purchase of spare parts, we reduce the purchase cost and provide a more competitive and high quality OEM spare parts for the customers.



Import And Export Of Machinery & Equipment

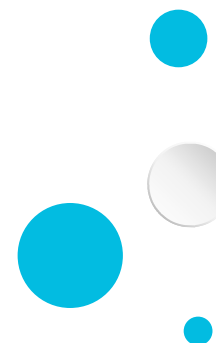
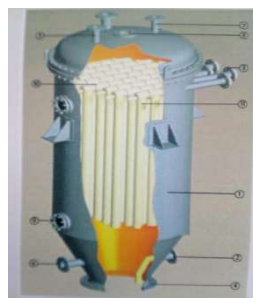
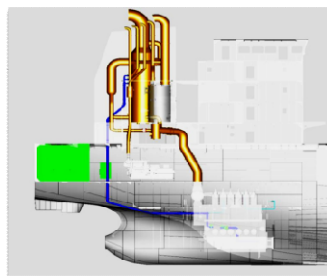
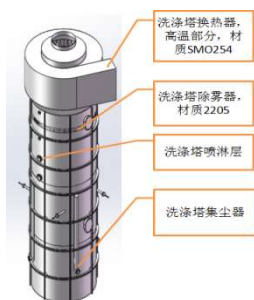
Performance

1、 Shipbuilding equipments: main engine, shaft system, propeller, generator set, engine room pump, oily-water separator, sewage treatment device, valves, marine equipment and so on.



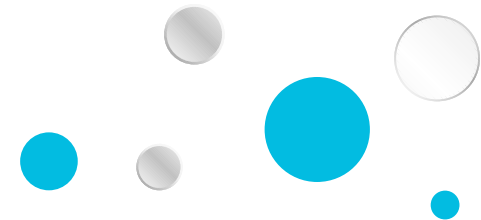
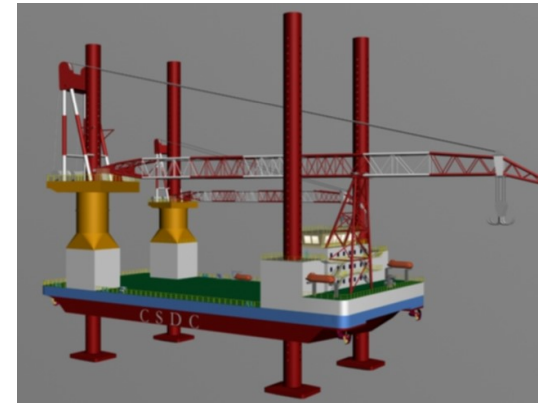
Import And Export Of Machinery & Equipment

2、De-SOx system equipment: air compressor, air reservoir, sea water pump, NaOH pump, separator, filter , exhaust gas monitor , filter press, valves and other De-SOx system equipment's supply.



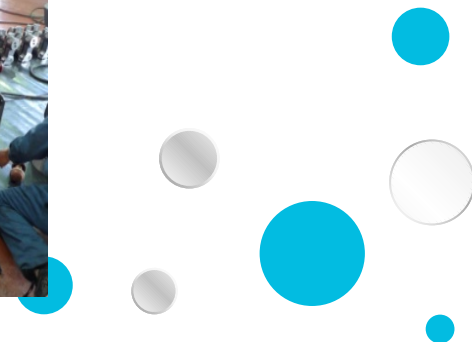
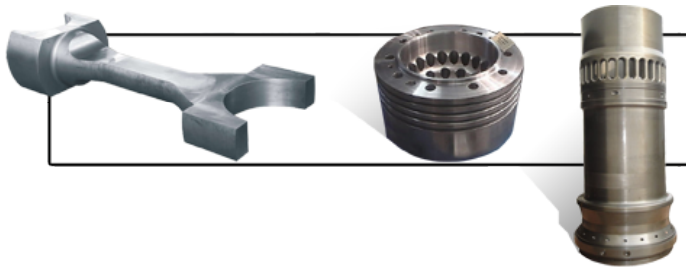
Import And Export Of Machinery & Equipment

3、 Offshore equipment: cargo oil pump, diesel engine driven fire pump, inert gas system, nitrogen system, reverse osmosis freshwater generator , and drilling equipment and tools onshore and offshore .

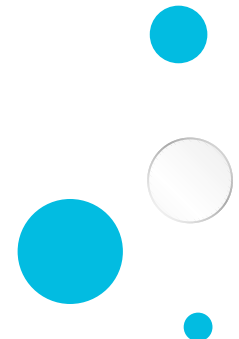
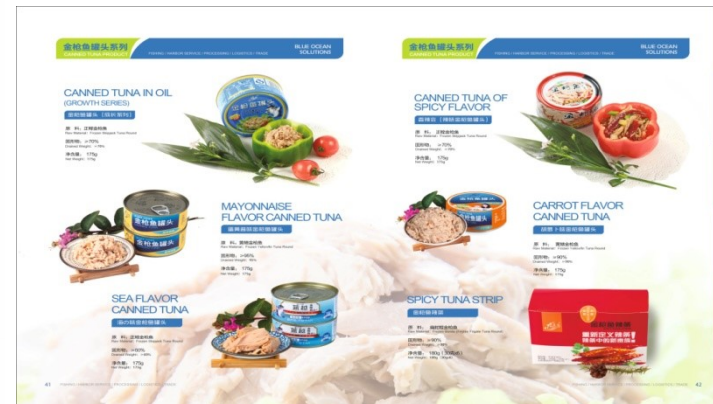


Import And Export Of Machinery & Equipment

4、 Spare parts for operation vessel: main engine and generator cylinder head, piston, piston ring, turbocharger and other spare parts, consumables such as fuel oil, lubricating oil, hydraulic oil, various equipment seals and so on.



Fishery Products



Fishery Products

TUNA SANDWICHES

金枪鱼三明治

主料
吐司、金枪鱼罐头、生菜

辅料
沙拉酱、番茄酱、洋葱、胡椒粉、盐

做法
1. 将吐司切成两片，中间挖去一部分。
2. 将金枪鱼罐头中的鱼肉取出，加入沙拉酱、番茄酱、洋葱、胡椒粉、盐拌匀。
3. 将拌匀的馅料填入吐司中。
4. 将吐司放入烤箱，烤至表面金黄即可。

TUNA PIZZA

金枪鱼披萨

主料
披萨饼底、金枪鱼罐头、洋葱、青椒、番茄酱、马苏里拉芝士

做法
1. 将披萨饼底放入烤箱，烤至表面金黄。
2. 将番茄酱均匀涂抹在饼底上。
3. 将洋葱、青椒切成丁，加入金枪鱼罐头中的鱼肉拌匀。
4. 将拌匀的馅料均匀铺在饼底上。
5. 将马苏里拉芝士碎均匀撒在馅料上。
6. 将披萨放入烤箱，烤至芝士融化即可。

TUNA SUSHI

金枪鱼寿司

主料
寿司饭、金枪鱼罐头、寿司醋、海苔

做法
1. 将寿司饭煮熟，加入寿司醋拌匀。
2. 将金枪鱼罐头中的鱼肉取出，切成小块。
3. 将寿司饭捏成团，放入海苔中。
4. 将金枪鱼块放在寿司饭上即可。

TUNA SASHIMI

金枪鱼刺身

主料
金枪鱼罐头、酱油、芥末、姜片

做法
1. 将金枪鱼罐头中的鱼肉取出，切成薄片。
2. 将鱼肉片放在盘子上，加入酱油、芥末、姜片即可。

鮪魚產品系列

鮪魚產品系列

鮪魚產品系列

鮪魚產品系列

鮪魚罐頭產品系列

鮪魚罐頭產品系列

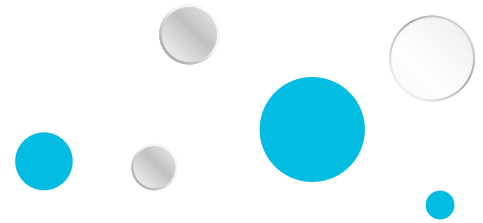
鮪魚罐頭產品系列

鮪魚罐頭產品系列

Other Business Sectors

Solid cash flow, high-speed
development platform

- Corporate Merger and Acquisition
- Ship Management & Chartering Service
- Financing Service





Integrity

As the group business headquarter and trading house of Xinfu Group, TJXH will work together with group's enterprises and provide high-quality of ship Repair / Conversion , New Shipbuilding and Equipment supply services for all the global customers.





Thank You!



ADD: No.10 Yihang International Building, Free
Trading Zone of Tianjin Port, Tianjin
Tel: 022 - 25601210-808
Web: www.xin-fa.com / www.tjxh-international.com
E-mail: business@tjxh-international.com