



福建華東船廠有限公司

FUJIAN HUADONG SHIPYARD CO.,LTD.



船廠地址:

福建省羅源縣碧裏

電話: 0591-26977202、26977301 傳真: 0591-26971399

郵箱: business@fjhdshipyard.com

Add. (Shipyard):

Billi, Luoyuan County, Fuzhou, Fujian, China

Tel: 0086-591-26977202/26977301 Fax: 0086-591-26971399

E-mail: business@fjhdshipyard.com





到達船廠時間
Time to Reach shipyard

A	酒店/Emark Hotel	15min
B	福州/Fuzhou	70min
C	機場/Airport	90min
D	寧德/Ningde	40min
E	羅源縣城 Luoyuan Town	20min



華東船廠位於中國最理想的深水避風良港——中國福建羅漢灣的北岸（北緯26° 27' N,東經119° 43' E），於2011年投入運營。廠區總面積約70萬平方米，擁有深水岸線2250米。船廠已建有40萬噸級（375m×72m）、17萬噸級（295m×50m）、10萬噸級（245m×41.8m）幹船塢各1座；5萬噸級船臺（280m×75m）1座；30萬噸修船碼頭6個泊位總長1300米（第二期計劃增加1個泊位，長度400米），生產車間等廠房約5萬平方米，并配套相應的生產設施、設備。

羅漢灣地處中國東南海沿海口岸，東臨國際海運要道——臺灣海峽。灣內四山環抱，水域面積約220平方公里，具有港闊、水深、風緩、浪平、流緩、不淤、不凍且避風條件良好等諸多優越條件，是福建省最主要的深水港區之一。羅漢灣優越的地理位置、自然條件和区位优势，非常有利於為船東提供最安全和最便捷的修船服務。

華東船廠以安全、便捷、質量、服務等要素逐步贏得了衆多船東的認可，修船業務已遍布20多個國家和地區，與日本、韓國、新加坡、臺灣、香港以及歐洲的德國、英國、意大利、希臘、中東的阿聯酋等國家和地區的船主的航運企業建立了長期良好的修船業務關係，其業務覆蓋範圍正在逐步擴大。

華東船廠在體系建設方面通過了ISO9001:2008質量管理體系認證，ISO14001:2004環境管理體系認證，GB/T28001-2011職業健康安全管理体系認證，QSY1002.1-2007HSE管理體系評價。



Fujian Huadong Shipyard lies to the north coast of Fujian Luoyuan Bay (26° 27' N, 119° 43' E) which is the most ideal deep-water shelter port in mainland China. The shipyard started repairs and new building from 2011, covers area about 700,000sq.m and deep-water shoreline about 2,250m. Shipyard comprises three dry-docks with capacity of 400,000DWT(375m x72m), 170,000DWT(295m x50m) and 100,000DWT(245m x41.8m) respectively; a slipway with a capacity of 50,000DWT(280m x75m); 300,000DWT repair pier about 1,300m with 6 berths (2nd phase project plan to increase 400m), workshops etc about 50,000sq.m with supporting production facilities & Equipments.

Luoyuan Bay locates among the port clusters of South-east coastal areas of China and faces the main sea routes—Taiwan Strait to the east. Surrounded by mountains, the Bay has a water area of about 220sq.km. Incomparable advantages of the Bay are deep water, broad expanse, calm wave, and gentle water-flow, mud free and ice free etc. it is now one of the key deep-water port areas in Fujian Province. The natural condition and location advantages are quite favorable for the shipyard to perform the safest and most convenient ship repairing.

Yard keep in persisting the tenet of "Safety First, High Efficiency, Assured Quality, Excellent Service" and won the worldwide ship owner's approval. Our customers have cover more than 20 countries and areas including Japan, South Korea, Singapore, Taiwan, Hong Kong etc and Europe countries such as Germany, UK, Italy, Greece, Cyprus etc and UAE in Mid-east, yard have build the strong relationship with many reputed shipping companies.

Yard have been accredited to ISO 9001:2008 Quality Control System certificate and have been accredited to ISO14001:2004 Environmental Management System certificate, GB/T 18001-2001 Occupational Health and Safety Management System certificate, Q/SHY1002.1-2007HSE Management system certificate.



船塢 / Dry Dock 船塢規模 / Dock Dimension

1# 295m x 50m x 14.4m

2# 375m x 72m x 14.9m

3# 245m x 41.8m x 13.9m



▲ 1#碼頭 / NO.1 Repair Pier (900m x 10m draft)

▼ 2#碼頭 / NO.2 Repair Pier (400m x 10m draft)





散貨船 BULK CARRIER



VLOC BAOGANG SPIRIT



VLOC NOYO



RED AZALEA



6000TEU GREENWICH BRIDGE



6000TEU JPS DEBUSSY



14500TEU MSC PALOMA



CAPE SIZE GOLDEN SHANGHAI



VLOC OREHME



DOUBLE PROSPERITY



5800TEU GENOA



8000TEU LISBON



UNI-ACCORD



IKAN SALMON



ORE SALVAOOR



JIMEI FUHAO



GRAND PHOENIX



NORTHERN HIGHWAY



FEDORA

集裝箱 CONTAINER

滾裝船 PCC



油輪 TANKER



VLCC "YANGTZE SPRING"



EAGLE EXPRESS



VLCC DELTA MILLENNIUM



GAS INSPIRATION



GAS EVOLUZIONE



TORVANGER

LPG



SUEZ TANKER DELTA TOLMI



ASTRA



BW BAHINA



Dredger

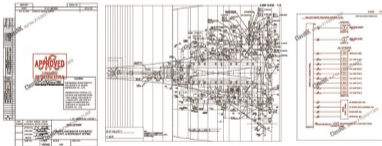


Offshore Accommodation platform

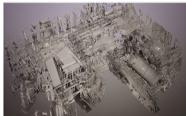


220T Floating Crane ZHENG FU 5 TONS

其他 OTHER



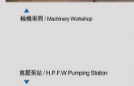
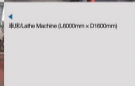
- 3D掃描、建模/3D Scan/ Modeling
- 設計/Design
- 安裝/Installation

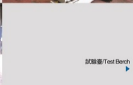



 ▲ 電源車間E-workshop
 ▲

 ▲ 1000噸壓機 / 1000T Hydraulic Machine
 ▲

 車床/Lathe Machine
 ▶

 空壓站/Air Compressor Station
 ▶

 ▲ 輪機車間 / Machinery Workshop
 ▲

 ▲ 車床/Lathe Machine (L6000mm x D1600mm)
 ▲

 ▲ 高壓泵站 / H.P.F.W Pumping Station
 ▲

 試驗臺/Test Bench
 ▶

 主要起運設備一覽
 Main Lifting And Transportation Equipment

設備名稱 / Name	規格 / Capacity	數量 / Qty
龍門吊 / Gantry Crane	100T	1
	260T	1
門座式起重機 / Jib Crane	50T	7
	25T	3
	100T	1
	150T	1
叉車 / Forklift Truck	5T	5
	3T	5
	7T	3
	7.5T	4
	10T	6
高架車 / Cherry Picker	21m-30m	55
平板車 / Trailer	100T	1
汽車吊 / Automobile Crane	25T	1
	35T	1
空壓站/Air Compressor Station	640m ³	1
	440m ³	1
拖輪/Tugboats	4500HP	2
	4000HP	1
高壓泵站 / H.P.F.W Pump station	380PSI	5



ABB Turbocharging



岑和 SPECIAL WORKSHOP





▲ 艏側推修理/Bow Thruster Overhauling

▼ 板式冷却器清洗/Plate Cooler Cleaning



▲ 超声波清洗/Ultrasonic Cleaning

▼ 气缸头修理/Cylinder Cover Overhauling



▲ 副机曲轴/ A/E Shaft Overhauling

▼ 主机缸头修理/ M/E Cylinder Cover Overhauling



▲ 马达拆检/E-motor Overhauling

▼ 船盖修理/ Hatch Cover Repair





高尔登船舶工程(上海)有限公司
Goltens Shanghai Co., Ltd.



瓦锡兰中国有限公司
WARTSILA CHINA CO.LTD



迈奇特船舶工程有限公司
MichaelTech shipping engineering



上海萨捷机械设备有限公司
Shanghai Sajee Machinery



上海德协机电设备有限公司
Shanghai DEXIE Engineering equipment



舟山万度力机械工程有限公司
Metalock Engineering Zhanzhou



上海赛特机电服务有限公司
Shanghai Safete Marine Services Co., Ltd.



河南光群电器有限公司
Guan Qun Co., Ltd.



中海工业上海万度力机械工程有限公司
China Shipping Industry Shanghai Metalock



厦门捷和联合设备工程有限公司
Xiamen Joinhand SEB Engineering Co., Ltd.



福建老南平宝同机电有限公司
FUJIAN NANYING KANGONG MOTOR CO.,LTD



上海欧慕利测控技术有限公司
Shanghai Omur Machinery Tech Co., Ltd



扬州航成海事工程有限公司
Fuzhou Housi Success Marine Engineering Co., Ltd.



厦门七海电子技术有限公司
Seven Seas Electronic Co., Ltd(厦门)



江阴新泰特船舶设备有限公司
Jiangyin Neptun Marine Appliance Co., Ltd



浙江(南通)船舶工程有限公司
ZHEJIANG YONG 耀星造船工程



辦公大樓/Office Building



大堂/Lobby



商務中心/Business Center



簡潔辦公室1/Office







企業精神 Entrepreneurship

誠信 嚴謹 創新 共濟
Trustworthy, Detail-oriented, Innovative, Team Work

經營方針 Management Policy

打造一流的團隊

To Create First-class Team

提供一流的服務

To Provide First-class Service

確保一流的品質

To Ensure First-class Quality

樹立一流的信譽

To Build-up First-class Reputation