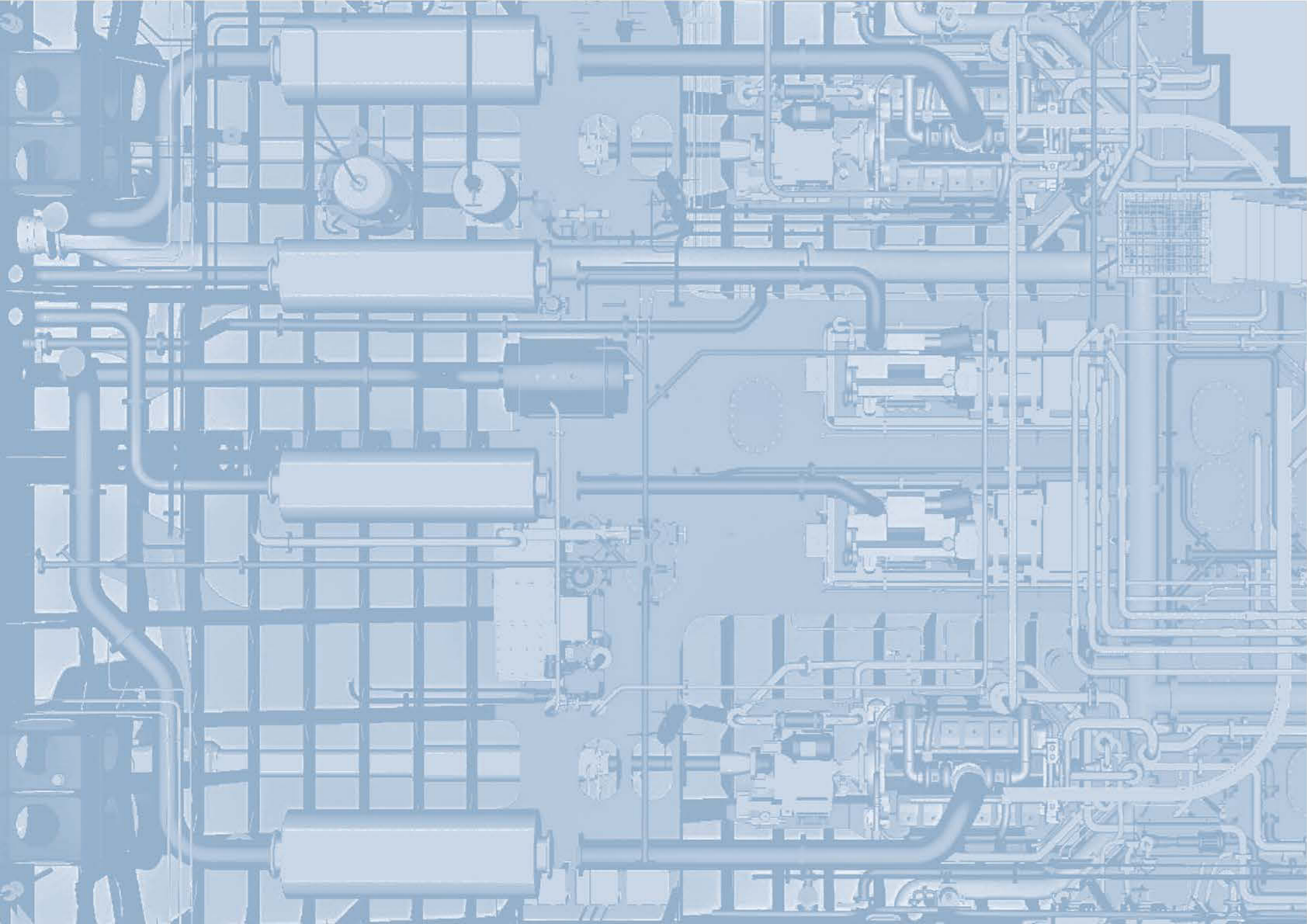


SHIP BUILDING | CONVERSION | SHIP REPAIR



MTG  DOLPHIN  
PLC





MTG-DOLPHIN PLC was established in January 1991 as the first private shipyard in Bulgaria.

Today, it is still family controlled business.

We count on motivated team of 700 professionals with considerable experience in the industry, working for satisfaction of our customers from all over the world.

We offer individual approach for each client, flexibility and experience, technical and commercial reliability.

The Shipyard is home of our vision and ideas, our ambition to perform better and keep our promises.

Because We Care for  
Every Single Ship and Customer







#### **1991 – 1995**

12<sup>th</sup> January 1991 – Establishing of the company.  
Maintenance of Bulgarian and Greek owned vessels.  
Innovative organization for prompt and quality repairs at competitive price levels.  
The average number of employees during the period is 250.

#### **1995 – 2000**

1995 – 1998 – First stage of the Yard infrastructure is completed, including workshops, cranes, equipment and energy sources.  
February 1999 – Floating dock No.1 with lifting capacity of 18 000 t is set in operation.  
1999 – The company acquires quality management system certificate ISO 9001:2000 by the Lloyd Register Quality Assurance and becomes one of the first shipyards in Bulgaria working under its regulations.  
The average number of employees during the period is 450.

#### **2000 – 2005**

The marketing is globally focused and strong positions are gained.  
The company invests in modern equipment for welding, hydro blasting, tank coating, metal processing.  
Own non-destructive laboratory is established.  
Own training center is established.  
2005 – Second stage of the shipyard infrastructure, designated for shipbuilding and repair is completed.  
The average number of employees is 670.

#### **2005 – until present**

2006 – Floating dock No.2 with lifting capacity of 8 500 tons, suitable for both shipbuilding and repair is set in operation.  
The company starts shipbuilding activity and today is proven as successful Shipbuilder of sophisticated ships, with reliable track records for specialized vessels and maximum capacity of 17 500 DWT, such as chemical tankers, sailing ships, dredgers, tugboats etc.  
The first ship's conversion, including lengthening, widening and retrofitting is successfully carried out.

2016 – Investments are made in new shipbuilding halls with heavy crane equipment for elaboration of large sections, blocks and complete indoor building of specialized ships.

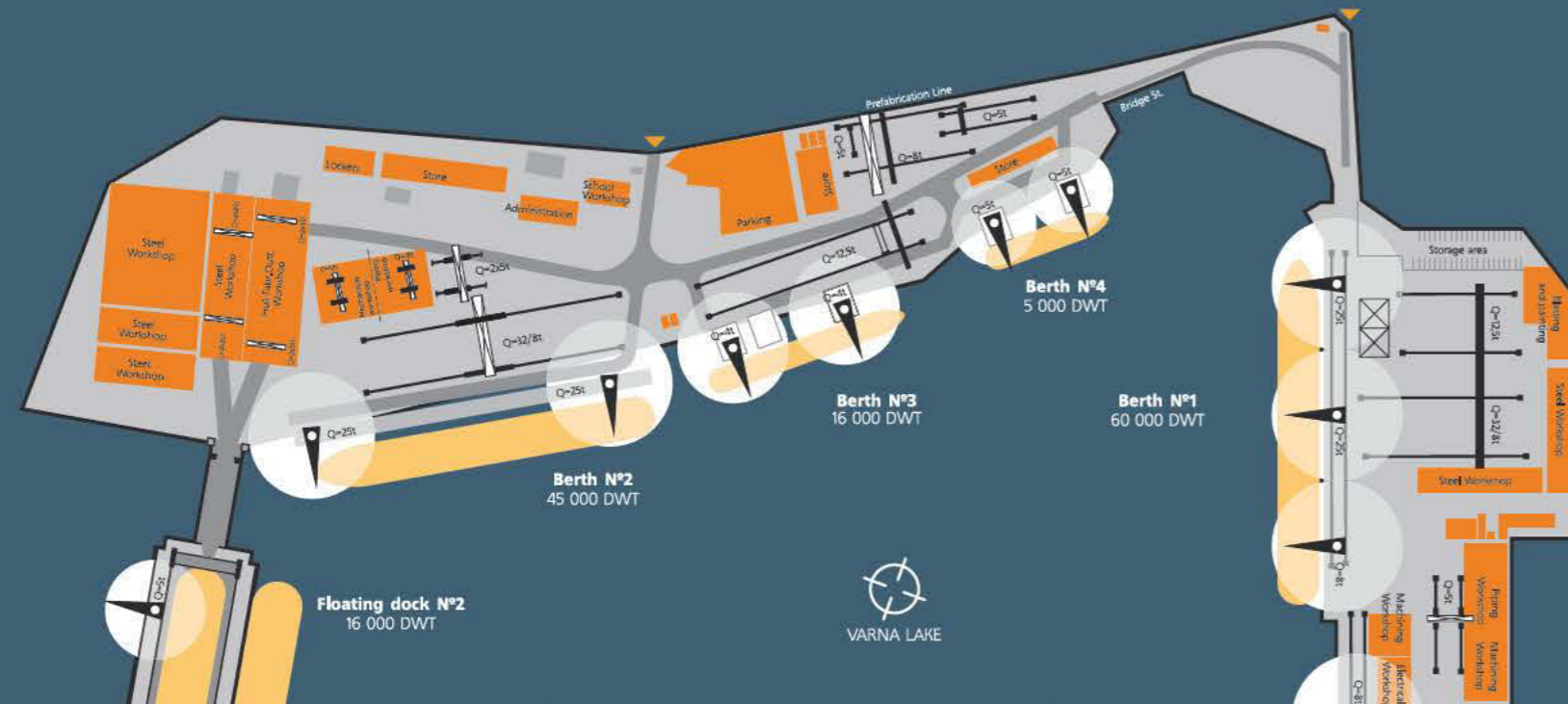
Nowadays MTG Dolphin is one of the leading shipyards in Black / Mediterranean Sea region.

And above all, we still maintain our passion for improving our services and products.

## **HISTORY**







**Floating Dock 1**  
 Lifting Capacity 18 000 t  
 LOA 205 m  
 B internal 31.5 m  
 Draft up to 9 m

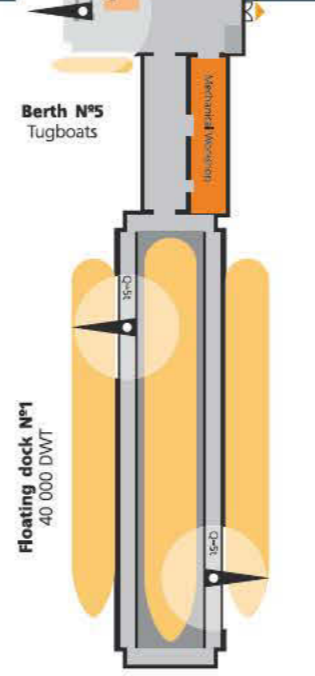
**Floating Dock 2**  
 Lifting Capacity 8 500 t  
 LOA 150 m  
 B internal 24.4 m  
 Draft up to 6 m

**Outfitting/repair quays**  
 LOA 1 250 m  
 Draft 6 – 10 m

**Cranes**  
 from 8 t up to 140 t  
 shore cranes;  
 100 tons floating crane

**Workshops**  
 Covered hull, piping,  
 blasting and painting  
 (including hydro-blasting  
 and tank coating),  
 machining, mechanical,  
 electrical and scaffolding  
 workshops.

# MAIN FACILITIES







We repair on average 60 vessels per year with total DWT in excess of 1 500 000 t. We understand that time and budgets are important, and safety is compulsory and we work hard to provide quick and high quality repairs at competitive prices, including:

## SHIP REPAIR



- Steel repairs (including hatch covers and outfittings)
- Blasting and painting (including hydro-blasting and tank coating)
- Main and auxiliary engines repairs
- Mechanical repairs of any vessel equipment
- Machining of details up to 10 m long and max 8 t.
- Pipe repairs
- Electrical and automation repairs
- Accommodation repairs, including refurbishing
- Stainless steel repairs
- Turbochargers repairs
- Governors repairs
- Fuel pumps repair





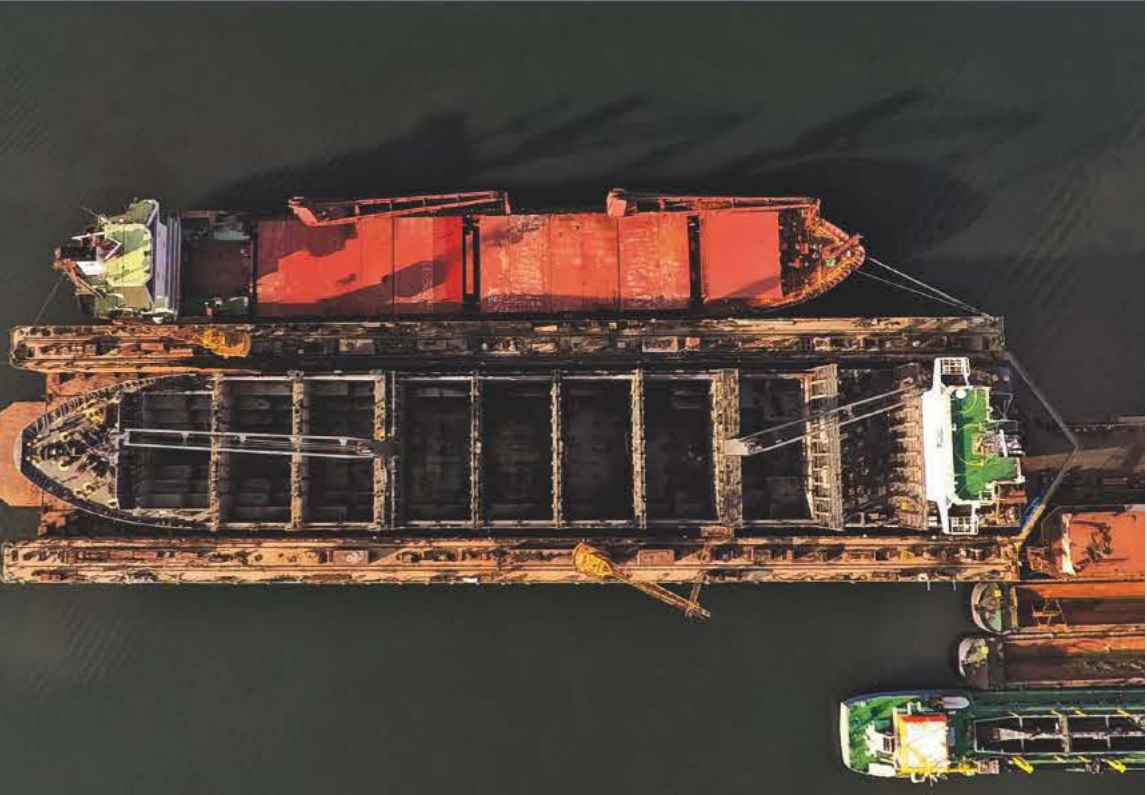


**We have considerable experience with the following type of vessels**

- Bulk carriers
- Tankers/Product carriers
- Gas carriers
- Reefers
- Dredgers
- Car carriers/Ro-Ro vessels
- Offshore vessels



# SHIP REPAIR

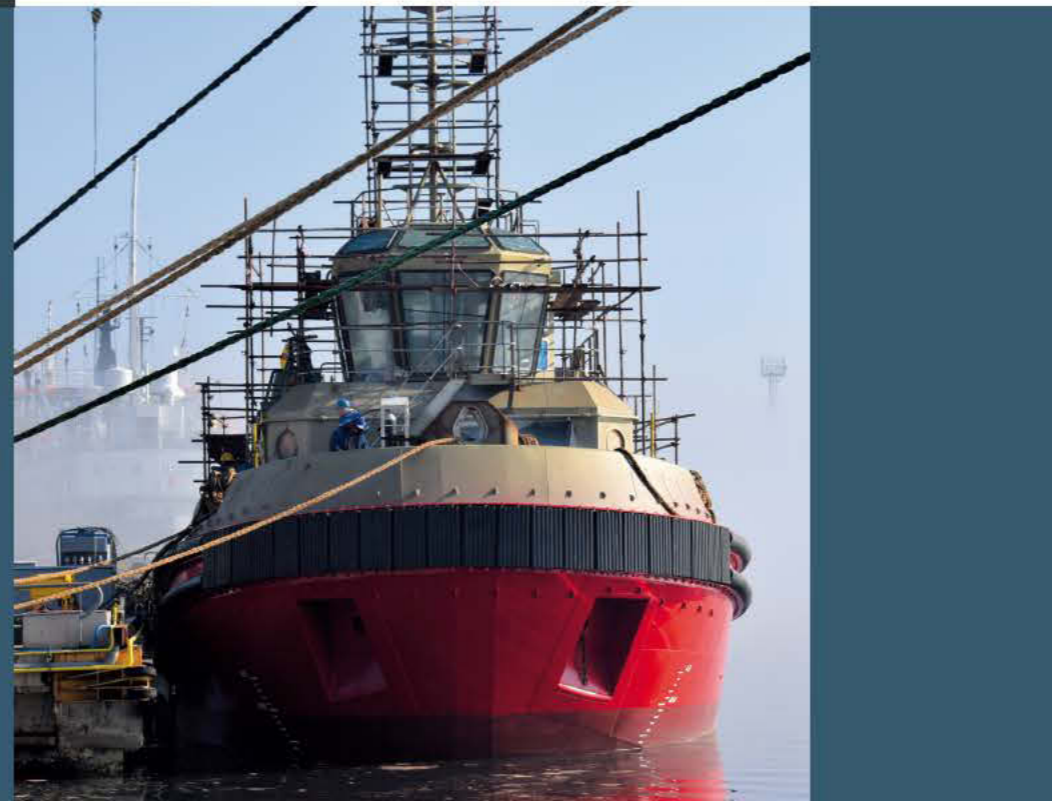






HRC-20 Hydrographic  
Research Catamaran

40T Bollard Pull  
Seagoing Tug Boat



# SHIP BUILDING





# SHIP BUILDING



Sailing Barquentine

75 passenger Inland Ferry



1 500 m<sup>3</sup> Trailing Suction  
Hopper Dredger\*

1 350 kW Cutter  
Suction Dredger\* – hull

750 m<sup>3</sup> Grab Hopper Dredger\*  
Hopper capacity of 750 m<sup>3</sup>

1 840 m<sup>3</sup> Trailing Suction  
Hopper Dredger\*

438kW Cutter  
Suction Dredger\*

2 700 m<sup>3</sup> Trailing Suction Hopper  
Dredger  
Easy Dredge®\*

\*DREDGERS – built in cooperation  
and by order of Royal IHC



# SHIP BUILDING







3 000 m3 Inland waterways  
hemical tankers

2'750 M3 Bunkering Tanker

1'500 DWT Oil-Product Tanker

Offshore structures

# SHIP BUILDING





# SHIP BUILDING



## DEFENCE & SECURITY

Combatants  
From 32 m to 90 m







# CERTIFICATIONS

The Yard operates under HSEQ Management System, according to ISO 9001:2008, ISO 14001 and OHSAS 18001 by Lloyd Register's and under the Bulgarian ministry of Defence's NATO AQAP 2110 certificate. The working procedures, non-destructive testing and welding procedures are certified by LR, GL, BV, RMRS and RINA societies.

With our HSE and Quality Policies we express our Commitment to be better Employer, Contractor and Business partner.



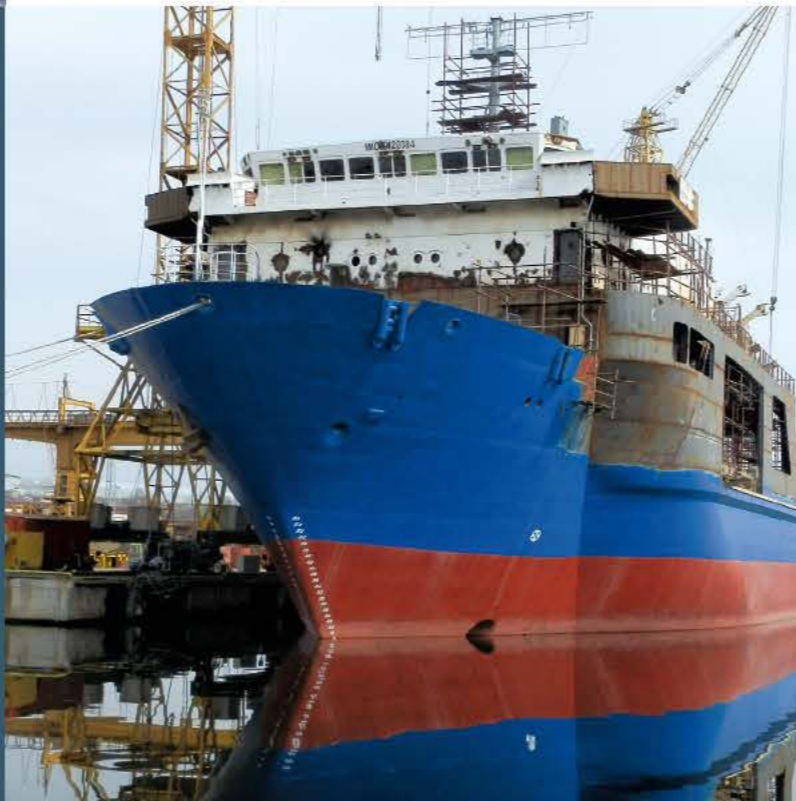




# CONVERSION

## Conversion of Ro-Ro Sondas to train ferry Varna

Having years of experience in shiprepairs and shipbuilding, and our own design team, we are able to undertake conversion projects, including modifications, jumbodising (lengthening and widening of the vessel), modernization of equipment and accommodation, refurbishment, upgrading of electrical and navigational systems, etc.

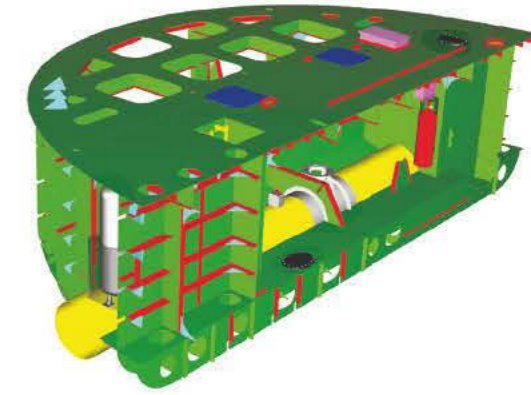


Name	Value before Conversion	Value after Conversion
Length overall, m	140.4	150.2
Breadth overall, m	16.6	22
Draught, m	4.7	5
Capacity-wagons	0	51
Capacity-trucks	20	24
Crew/Passengers, pers.	32	45
Speed, knots	13	11





The contribution of our design department is significant. The designers' work begins before the work of all other departments, because they must develop, coordinate and provide the technical and workshop designs, which are the essential part of the vessel's construction. The design of a ship is always made in close cooperation with the Client to suit the demands. As we often build one of a kind vessels, our design team happens to define its work as a challenge.



## DESIGN OFFICES

### Initial design

- General Arrangement
- Specification
- Weight calculations
- Hull form generation
- Hydrodynamics (power speed)
- Hydrostatics (intact and damage stability)
- Longitudinal strength
- Midship section
- Tonnage
- Freeboard/bowheight

### Basic engineering

- Structural engineering:
- Scantling Calculations
- Main Steel Classification
- Drawings
- Arrangement Drawings
- Mechanical engineering:
- System Diagrams
- Arrangement Drawings of Engine Room and Technical Spaces

### Detailed engineering

- Detailed construction drawings including
- part numbering and nesting
- Production information
- Part lists
- Profile lists
- profile bending information

### Conversions

### BWTS (Ballast water treatment systems)

- Newbuilding and retrofitting
- Initial study
- Development of the project
- Approval by Class and Owner
- Installation on spot





Bulgaria's third city and maritime capital, Varna is the most interesting and cosmopolitan town on the Black Sea coast. A combination of port city, naval base and seaside resort, it's an appealing place with warm and temperate climate, packed with history yet thoroughly modern.

## ADDITIONAL SERVICES



Knowing how important the hospitality is, we aim at ensuring safe and warm stay not only for the ship, but for its crew too.

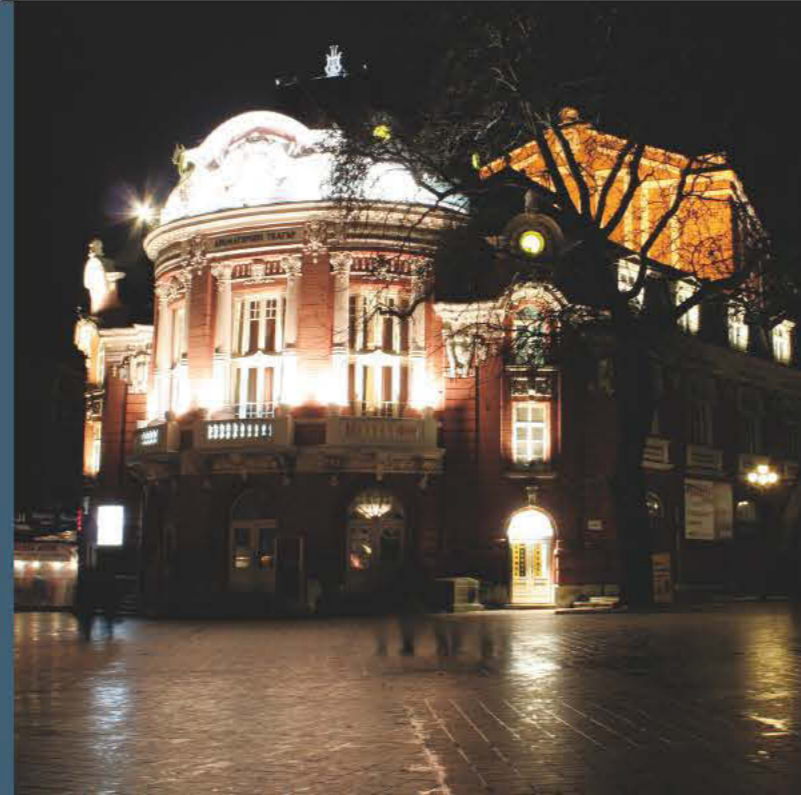
We provide work comfort at the Yard, housing facilities in company's buildings at close distance, as well as 24/7 agent services with our in-house agency.

### Facilities for superintendents and clients

Accommodation in company's residential buildings, 2 km away (wi-fi and cleaning included)

At the Yard:

- Free wi-fi
  - Free office
  - Free bike
  - Free overall, helmet, safety shoes, gloves, jacket
- 24/7 inhouse agency service by Alpha Maritime





# REFERENCE CLIENTS



MSC Shipmanagement



Columbia Shipmanagement



Interorient Navigation



DS Schiffahrt GmbH&Co



Rubis Shipping



Maestro Shipmanagement



Intership Navigation  
Donnelly Tanker Management



Navarone SA



Green Reefers



Boskalis



Tsakos Columbia  
Shipmanagement



Anglo-Eastern



Bernhard Schulte  
Shipmanagement



Thenamaris



Ciane S.p.a.



Fednav



Navigation Maritime Bulgare



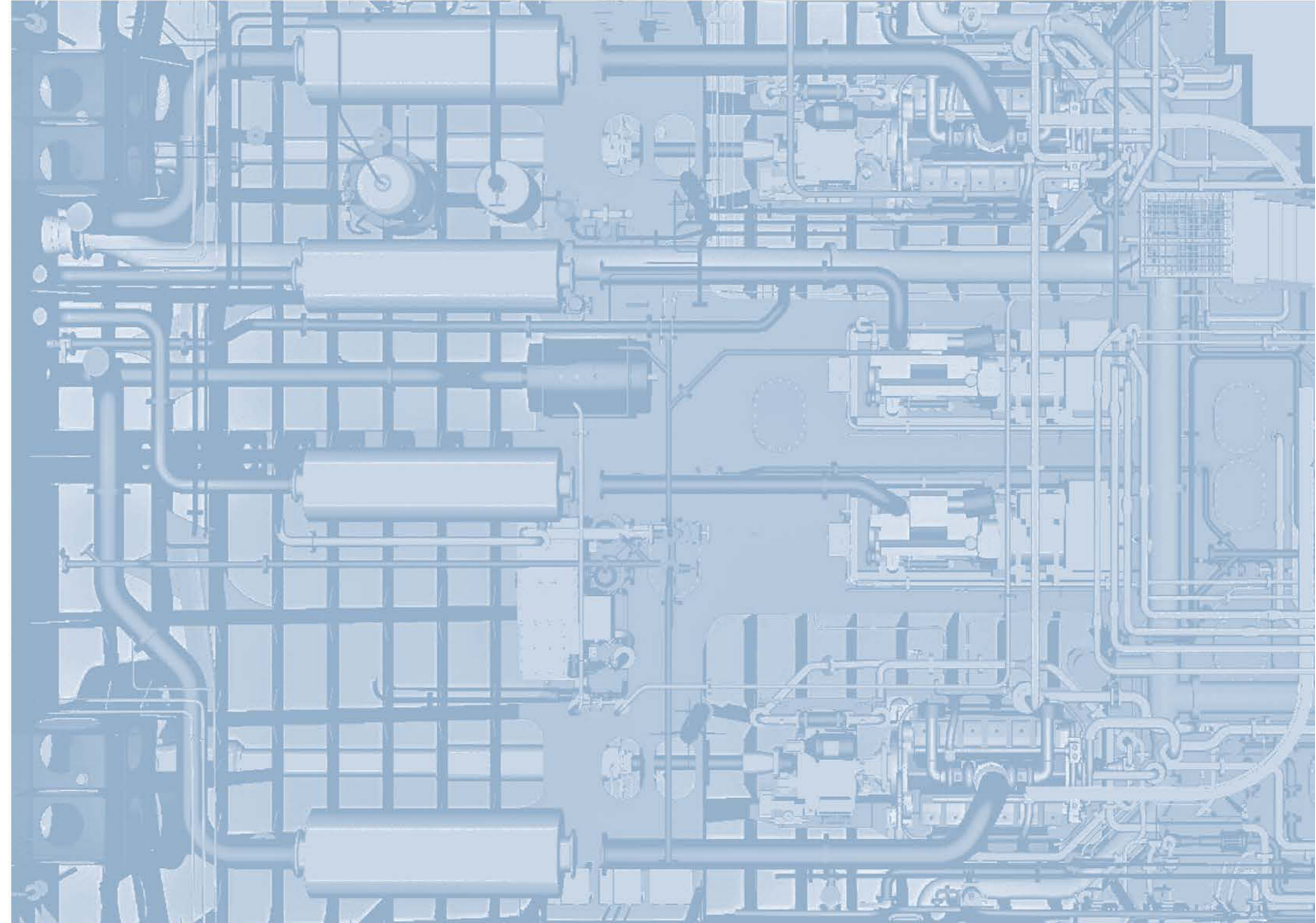
Seatrade Groningen



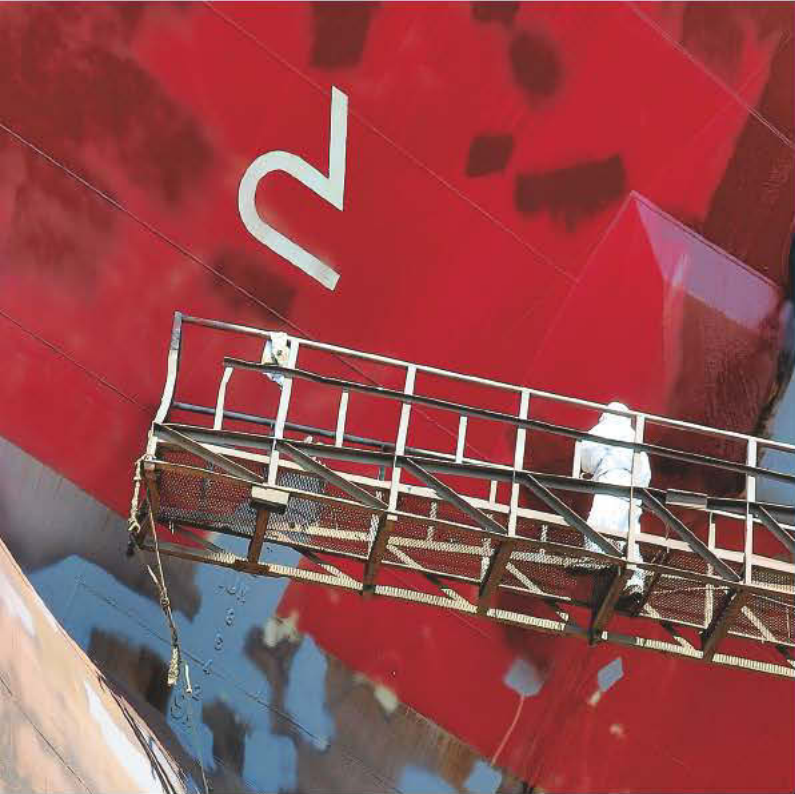
Marmaras Navigation



Baggerbedrijf de Boer  
Dutch Dredging







AN AUTHORIZED DISTRIBUTOR



**WÄRTSILÄ**



**Optimarin**  
OPTIMAL BALLAST SYSTEM

MTG DOLPHIN PLC  
8, Drazki Str  
9000, Varna  
Bulgaria  
P: +35952602074  
P: +35952739721  
F: +35952632963  
F: +35952739747  
info@dolphin1.bg  
office@dolphin1.bg

Representatives:

Cyprus  
WSR Services Ltd  
P.O. Box 58019  
3730, Limassol  
P: +35725344418  
F: +35725344419  
mail@wsr.com.cy

Greece  
WSR Services Ltd  
Klisovis 1  
18538, Piraeus  
P: +302104282552  
F: +302104287165  
mail.gr@umarwsr.com

Germany  
CombiTrade GmbH  
Kehrwieder 9  
20457, Hamburg  
P: +49408080110600  
F: +49408080110699  
t.schultze@combitrade.de

Belgium, Netherlands  
and Luxembourg  
Ruysch Technical Agencies  
Mijlweg 2a  
23295 KH, s Gravendeel  
The Netherlands  
P: +31786732544  
P: +31652415991  
F: +31652415991  
agencies@ruysch.nl